

Work-Based Learning in RUReady.ND.gov

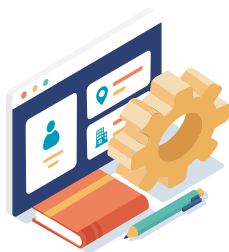
Ease your workload and help your students find a career they love with the Work-Based Learning Module on RUReady.ND.gov, designed in collaboration with XAP, North Dakota Career and Education (CTE), and Golden Path Solutions (GPS).

KEY FEATURES



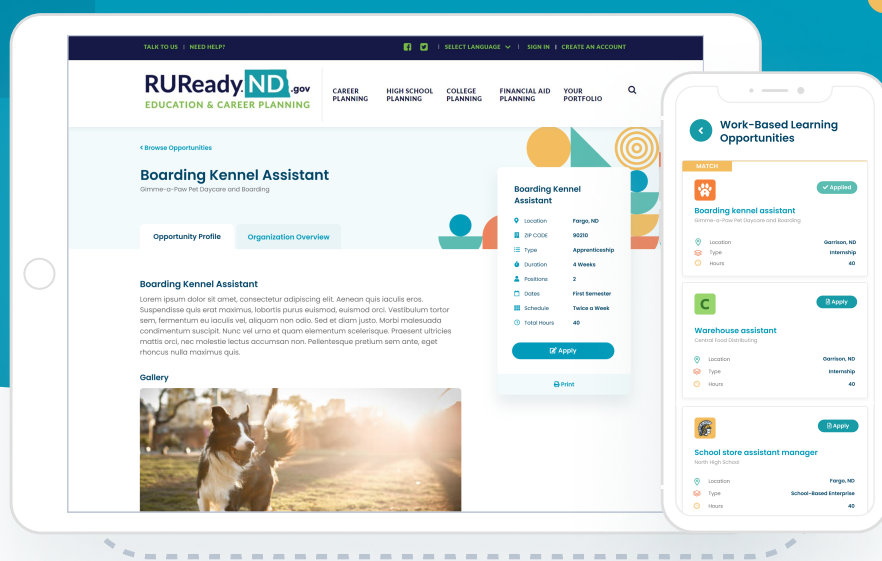
Work-Based Learning Tools for STUDENTS

- ✓ Easily discover, track, and record work-based learning opportunities
- ✓ Browse, filter, search for, and apply to opportunities of interest
- ✓ Document and reflect on all types of work-based learning experiences
- ✓ Connect student work experiences to career goals and academic plans



Work-Based Learning Tools for EDUCATORS

- ✓ Create and manage employer profiles and opportunities
- ✓ Efficiently review and action student applications
- ✓ Send and review employer performance evaluations with ease
- ✓ Utilize resources and tools to support implementation
- ✓ Measure and report on key performance and accountability indicators and outcomes



Our partnership with North Dakota-based Golden Path Solutions (GPS) eases educator workload even further.

Golden Path Solutions Benefits Include

- ✓ A preloaded database for educators to make available to students, continuously updated with local and vetted employers and opportunities
- ✓ GPS Compass assessment, which combines the student's results with their experiences in high school to suggest careers
- ✓ Matching students to employers for work agreements and tuition reimbursement opportunities

Work-Based Learning Tools for EMPLOYERS

- ✓ Maintain work-based learning processes through employer dedicated portal
- ✓ Readily edit and manage organization profile and create work opportunities (for review by school-based educators)
- ✓ Conveniently submit performance evaluations to school-based educators directly

The benefits of work-based learning extend far beyond the student and the classroom. Many employers recognize that attracting and developing young talent supports workforce development needs and helps local economies prosper. Let RUPreedy.ND.gov help you connect your students to the key WBL experiences they deserve.

To get started, visit www.cte.nd.gov/crnworkshops to sign up for upcoming WBL training workshops or contact Laura Glasser at leglasser@nd.gov or 701-328-9733 for more information.

